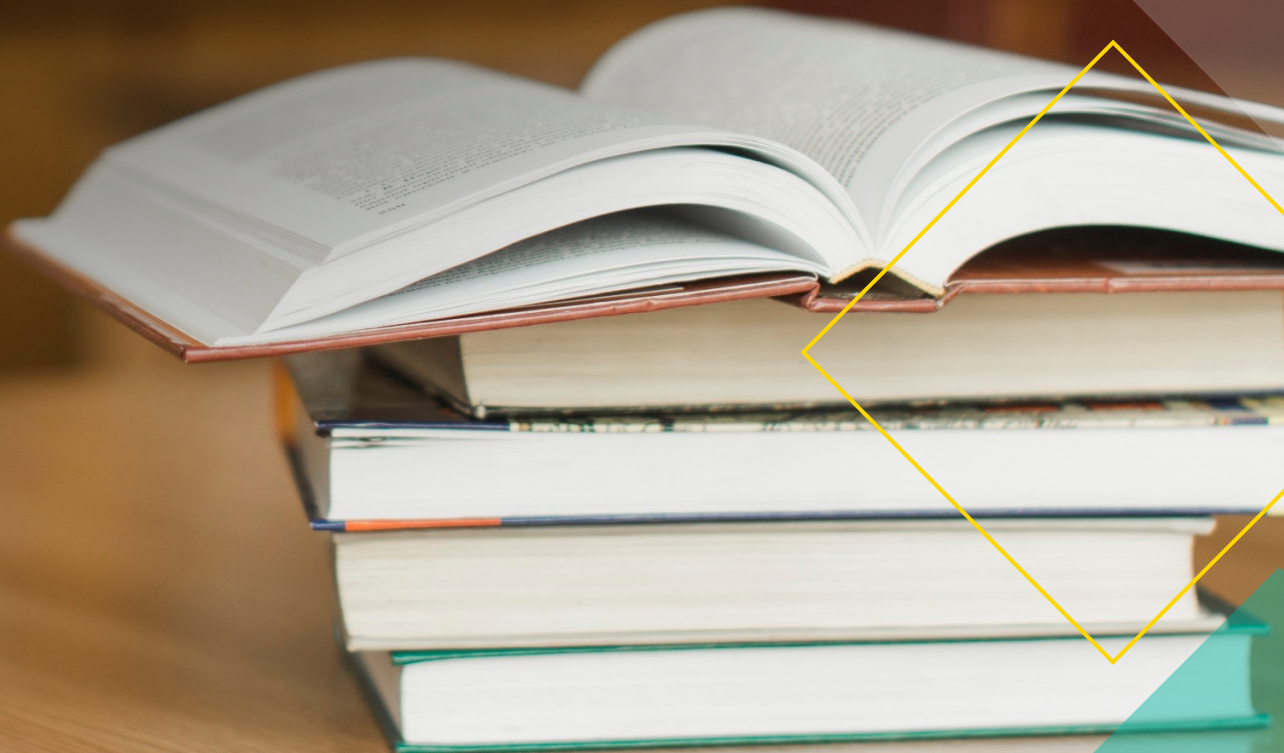




Service and Product Overview

November 2023



Making a profound impact on society is at the heart of who we are and what we do. As educators, we want every school to offer an excellent educational experience for its students. We want to be your partner to help meet your vision of a district that prepares students to be ready for the world.

We excel at supporting the implementation of Structured Literacy and evidence-based practices, and we're deeply committed to helping you bring out the best in your community.





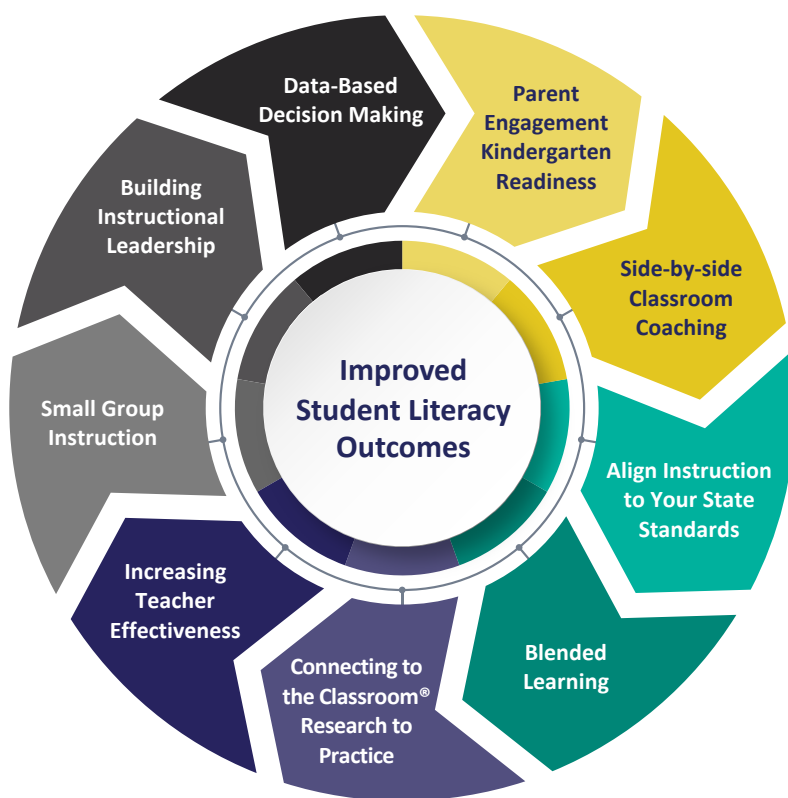
Who We Are & What We Do

In a world where literacy serves as the cornerstone of intellectual development, there remains an urgent need to **bridge the gap between the Science of Reading and educational practice**. At Step By Step Learning (SBSL), an MGT Consulting company, we are committed to redefining the landscape of education by **offering a comprehensive suite of services rooted in evidence-based methodologies, cutting-edge research, and personalized solutions**. With a team of seasoned experts in the field of literacy, we strive to empower educators, schools, and districts with the tools and knowledge necessary to cultivate a culture of proficient and enthusiastic readers.

We believe that every **student deserves access to a high-quality education**. By equipping districts with the latest research-backed techniques and resources, we aim to **transform classrooms** into vibrant hubs of literacy, where students flourish and unlock their full potential.

Impact and Benefits:

- Improved student engagement and performance in reading, leading to overall academic success and increased confidence among learners.
- Enhanced teacher effectiveness and job satisfaction through the implementation of evidence-based practices and ongoing professional development opportunities.
- Strengthened school and district-wide literacy initiatives that foster a culture of continuous learning and growth, resulting in a thriving educational community.



Our Team



Experienced, Dedicated, and Highly Qualified

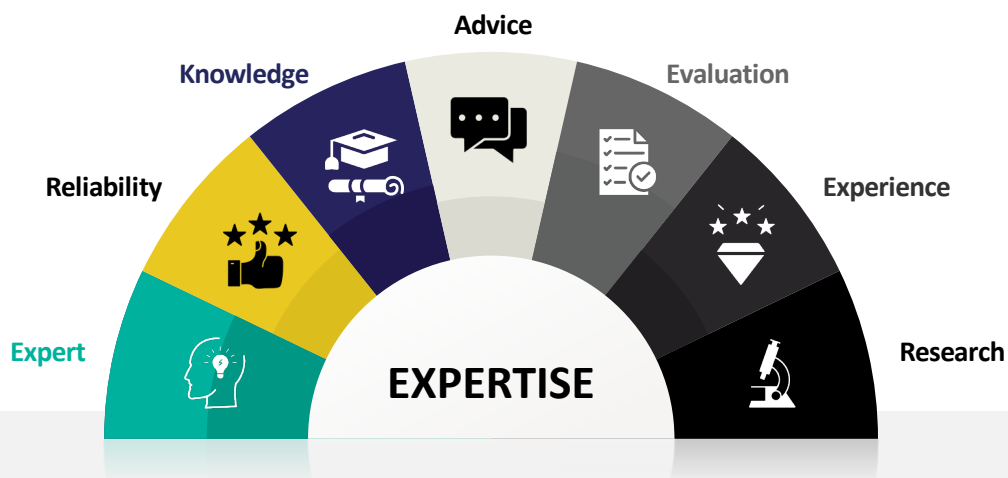
Step By Step Learning follows the International Dyslexia Association's (IDA) Knowledge and Practice Standards for Teachers of Reading (KPS). Therefore, our highly qualified team of Improvement Specialist's must maintain certification and credentials. The improvement specialists are highly trained and experienced in leading Science of Reading and Structured Literacy initiatives. This knowledge and expertise ensures that our products and services align with the science to maximize student learning outcomes.

Certifications and Credentials

Improvement specialists are certified through the Center for Effective Reading Instruction (CERI) as Structured Literacy Classroom Teachers, Dyslexia Interventionists, or Dyslexia Specialists.

Additional certifications and credentials held by team members include:

- ALTA Certified Academic Language Therapist (CALT)
- Orton-Gillingham Master Instructor
- Orton-Gillingham Practicum Supervisors
- MSJ Dyslexia Certification
- Reading Specialists
- Doctorates in Educational Leadership, Literacy, and Reading Science
- Masters in educational fields of study



Learn how our combined expertise, knowledge, and change management can support your district's goals to improve students' literacy outcomes.

Side By Side Partners

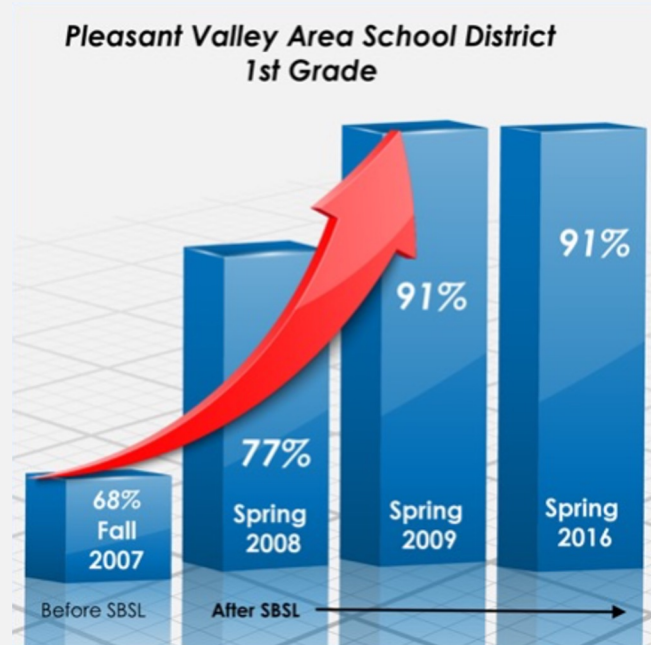
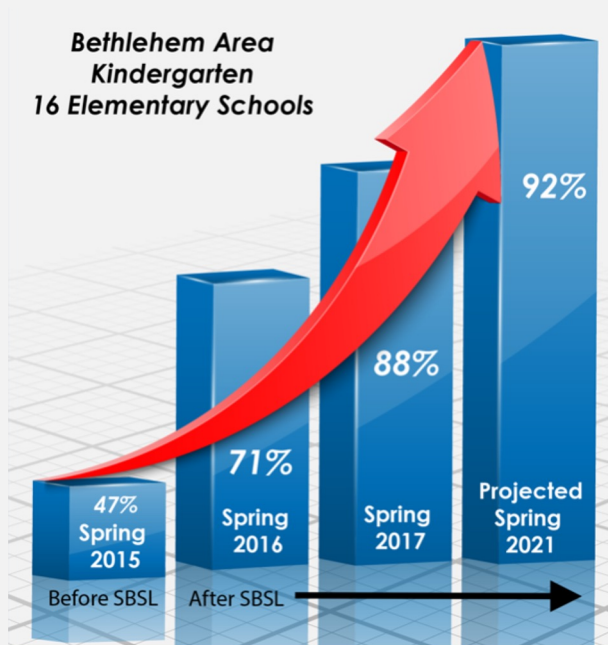


At Step By Step Learning, we work with districts and schools as a trusted partner in their journey toward holistic educational excellence. We help equip districts with the necessary tools, resources, and insights to cultivate a thriving literacy environment that nurtures the unique potential of every student. By fostering collaborative partnerships and offering innovative solutions, we aim to drive systemic change that leaves a lasting, positive impact on students, educators, and communities.

Refine Systems and Processes with Multi-Tiered System of Support	Comprehensive data analysis and strategic insights to help districts make informed decisions, identify areas for improvement, and leverage data to drive impactful changes across all levels of the education system.
Develop Instructional Leaders	Working with leaders to help facilitate and lead change initiatives with their buildings and staff by creating a literacy vision, implementation plan, assessment plan, and systems change. And provide professional development and coaching support as needed.
Increase Educator's Knowledge in the Science of Reading and Structured Literacy	Offering tailored workshops and training programs designed to equip educators with the necessary tools and strategies to effectively teach reading, ensuring that every student receives the support they need to succeed. The SBSL team works alongside teachers to implement the research into the classroom.
Expand Evidence-Based Instructional Practices	Supporting educators in making instructional decisions based on data is critical to shifting the educational experience for students. SBSL helps teachers identify the “just right” starting place for students through skill inventories. SBSL helps educators implement a structured literacy framework in word level reading and spelling, oral language, vocabulary, fluency, and reading comprehension; leveraging explicit, systematic instruction.
Deepen Community Engagement	Initiatives designed to foster community involvement and support for literacy education, promoting a collaborative approach that involves parents, caregivers, and local stakeholders in the journey toward improved literacy outcomes.
Curriculum Development	Collaborative curriculum development services that integrate the research from the Science of Reading into existing educational frameworks, creating a cohesive and comprehensive approach to literacy instruction.

Results Driven

At SBSL, our services and support are based on more than 30 years of neuroscience, cognitive research, and adult learning principles. Our method integrates systemic changes through consulting with leadership to coaching and mentoring with teachers directly in their classrooms. All students are equally important. Therefore, we customize our support to fit every need from large, urban schools to small rural districts.



At Step By Step Learning, we are dedicated to championing the Science of Reading and Structured Literacy as the cornerstone of educational success. By providing comprehensive support and resources, we strive to empower educators and schools to create a lasting impact on the lives of their students. Join us in our mission to revolutionize education and unlock the full potential of every learner through the power of literacy. We are here to support you every step of the way, helping you get your students to reach academic success.



Products and Services

Professional Development in the Science of Reading and Structured Literacy

- Online Learning Library (asynchronous)
- SBSL Course Bundles (live, virtual)
- Connecting to the Classroom® - Application of Evidence-Based Practices

Supporting Tiered Instruction

- Data-Driven Decision Making
- Instructional Planning
- Applying Formative Data
- Student Intervention Response Sessions
- Modeling and coaching of Structured Literacy Instruction
- Small Group Automation Tool - Integrates diagnostic/skill inventory, explicit, systematic, differentiated lessons, and formative data collection

Developing Instructional Leaders

- Leader Professional Development
 - Leading Instructional Change That Drives Academic Improvement for All Students
 - Leading Literacy: Comprehensive Planning Through Change Leadership
 - Leading Literacy: Data Interpretation in a Tiered Instructional System
 - Leading Literacy: Science of Learning to Read
- Mentorship and Coaching

Deepening Family Engagement

- Empowering schools to lead community engagement courses
 - Teach Me To Read at Home®
 - Teach Me To Learn at Home®

Consultation

- Support initiative planning, implementing, monitoring, and adjusting
- Support district leaders planning for sustainability and building capacity
- Support district in developing supporting resources



Lehigh University finds significant impact on student learning.

Contact us to learn more:
info@sbsl.org

Consultation Services



Needs Assessment

Each partnership begins with a needs assessment so that we understand the current and desired state of the district or schools. This allows us to align recommendations specifically to each district's needs, vision, and goals.

Implementation Planning

Planning, monitoring, and adjusting systems is critical to success. The active implementation and monitoring of progress through key performance indicators and milestones allows the leadership team to make meaningful and timely decisions that increase the rate of improvement and progress towards goals.



Ongoing consultation and support with district and building leadership as needed to support the change process.

Science of Reading & Structured Literacy

SBSL tailors workshops and training programs designed to equip educators with the necessary tools and strategies to effectively teach reading, ensuring that every student receives the support they need to succeed. We support educators by providing content-specific training and follow-up that is job-embedded (using the district's tools and resources) and is supported with modeling and coaching opportunities. These courses are provided through our Online Learning Library (asynchronous) or through virtual, live sessions.



Science of Reading

We offer a variety of courses on the research behind the Science of Reading. The research included is part of the consensus research across a range of fields including neurology, psychology, and education.

Understanding how we learn to read and the components of language (Phoneme Awareness, Oral Language, Phonics, Morphology, Syntax, and Semantics) empowers educators to plan meaningful learning experiences to meet the needs of all students.

Understanding the components of oral language and how they are the same and different in written language empowers teachers to make instructional decisions and prioritize time.

SBSLs Knowledge Coursework

- The Science (all)
- Dyslexia (all)
- Phonology (K-2; all teachers with students struggling to learn to read)
- Phonics and Spelling (K-3)
- Advanced Decoding Multisyllabic Words (1-6)
- Fluency (1-3)
- Vocabulary (1-12)

Additional courses that deepen learning and apply evidence based practices, include:

- Accessing Complex Text (3 and up)
- Close Reading (3 and up)

Middle and High School:

We have courses specifically designed to support content area teachers embed literacy instruction that enhances learning.

- Vocabulary
- Comprehension
- Adolescent Literacy
- Close Reading
- Modeling and coaching

Science of Reading & Structured Literacy

Connecting to the Classroom®

Step By Step Learning®'s coaching process begins with a Connecting to the Classroom® session that follows the initial presentation of the Science of Reading and Writing courses. This series of professional development sessions focuses and supports teachers in transferring new learning into instructional practices so that students benefit.

The workshops review key content and how this translates into evidence based practices. Teachers review district provided curricular materials to determine what modifications need to be made to more closely align instruction with the science.

During the workshop, teachers are actively engaged in learning and practicing instructional routines, reviewing materials and/or writing lessons using provided templates.

The Connecting to the Classroom® series modules:

- Phonology
- Phonics and Spelling
- Advanced Decoding of Multisyllabic Words
- Morphology
- Vocabulary
- Fluency
- Close Reading
- Accessing Complex Text
- Writing
- Oral Language
- Planning Meaning Fun: Planning for Centers
- Early Childhood
- Supporting Oral Language through Block Play

The Connecting to the Classroom® sessions maximize the learning from the initial science of reading courses. They go beyond the what and the why of the content to support teachers by sharing practical applications to the classroom setting. They provide teachers real-life applications of their learning that support student achievement.



Refine Systems and Processes within Multi-Tiered System of Support



We work with partners to evaluate current plans, review curriculum, implementation of tools and resources, and processes to maximize resources and leverage data. We identify what is working and areas of opportunity to ensure that all students have access to high quality instruction.

Complete literacy needs assessments and ongoing implementation evaluation with supporting recommendations with Step By Step Learning improvement specialists.

Customize consultation and support to meet the needs of the district and leadership team. This may include such items as a curriculum review, assessment plans, review of master schedule, and more.

Plan with district and building leaders to set achievable measurable goals and short cycle milestones with key performance indicators

Facilitate process and structure that supports leadership teams in creating a comprehensive literacy plan.

Develop Instructional Leaders

Shanahan (2018) in his Literacy Improvement Pyramid places leadership at the point of the triangle for a reason. The implementation science is clear on the importance of the role of leader in facilitating and leading change initiatives. Marzano et al. (2005), in Leadership that Works: Research to Practice, identified knowledge of curriculum and instruction and knowledge of assessments as key roles of building leaders when managing complex change.



We have three courses specific to supporting leaders in growing as instructional leaders:

1

**Leading Instructional Change
That Drives Academic
Improvement for All Students**

44hrs including job embedded activities

2

**Leading Literacy:
Data Interpretation in a Tiered
Instructional System**

44hrs including job embedded activities

3

**Leading Literacy:
Science of Learning
to Read**

45hrs including job embedded activities



Coaching and mentoring of leaders is based upon a leader's focus and implementation goals. Topics range from instructional rounds, data-driven decision making, data conversations, schedules, systems, processes, and resource allocation. Step By Step Learning improvement specialists work with individual leaders to ensure meaningful learning opportunities.



Modeling and Coaching

Modeling and coaching for teachers can have significant benefits for both educators and students.

1 Improved Instructional Practices:	Through modeling and coaching, teachers can observe effective instructional strategies in action, allowing them to develop a deeper understanding of how to implement best practices in literacy instruction. This can lead to more engaging and effective teaching methods that cater to diverse learning styles and abilities.
2 Personalized Feedback:	Modeling and coaching provide personalized support that addresses the specific needs and challenges of individual teachers. This targeted approach enables educators to receive feedback tailored to their unique instructional style, fostering continuous growth and improvement.
3 Increased Teacher Confidence and Efficacy:	Access to supportive modeling and coaching can boost teachers' confidence in their ability to deliver effective literacy instruction. As educators become more proficient in implementing evidence-based strategies, they may experience increased job satisfaction and a greater sense of efficacy in their teaching practice.
4 Cultivation of Reflective Teaching Practices:	Modeling and coaching encourage educators to engage in reflective teaching practices, allowing them to critically assess their instructional methods and make data-informed adjustments. This reflective process promotes continuous professional growth and encourages teachers to stay current with the latest research and instructional developments in the field of literacy education.
5 Building a Collaborative Learning Community:	Modeling and coaching foster a culture of collaboration and shared learning among teachers. Through observing and providing feedback to one another, educators can cultivate a supportive professional learning community that encourages the exchange of ideas, strategies, and best practices, ultimately benefiting the entire school or district.
6 Alignment with School/District Goals:	Modeling and coaching can be tailored to align with specific school or district-wide literacy goals and initiatives. This ensures that teachers receive targeted support that directly contributes to the overall improvement of literacy outcomes within the educational community.

By leveraging modeling and coaching as part of professional development initiatives, teachers can enhance their instructional skills, promote student success, and contribute to a positive and thriving learning environment within their schools or districts.

All coaching sessions are confidential between the teacher and Step By Step Learning improvement specialists to preserve the trust and relationship that is critical in establishing a safe environment for learning.

Deepen Community Engagement

Community engagement is crucial for promoting literacy in schools as it plays a vital role in fostering a supportive and enriching learning environment.

1 Reinforcing Learning Outside the Classroom:

Community engagement initiatives, such as literacy-focused events, workshops, and programs, extend the learning process beyond the classroom. By involving families, local organizations, and community members in literacy activities, schools can create a more holistic learning experience that reinforces literacy skills and encourages a culture of lifelong learning.

2 Promoting a Culture of Literacy:

When communities actively participate in promoting literacy, it helps create a culture where reading and learning are celebrated and valued. Community engagement initiatives, such as book clubs, storytelling sessions, and literacy-focused events, can instill a love for reading and learning, motivating students to become enthusiastic and lifelong readers.

3 Building Stronger Support Systems:

Community engagement fosters strong relationships between schools, families, and the local community. When families and community members are actively involved in supporting literacy initiatives, students receive additional encouragement and resources, which can positively impact their motivation, confidence, and overall academic success.

4 Tailoring Support for Diverse Learners:

Community engagement allows schools to better understand the diverse needs and backgrounds of their students. By collaborating with community organizations and leaders, schools can develop targeted literacy programs and resources that cater to the specific cultural, linguistic, and socioeconomic contexts of their students, fostering inclusive and effective learning environments for all learners.

5 Strengthening School-Community Relationships:

Community engagement in literacy fosters positive relationships between schools and the broader community. These partnerships create opportunities for collaboration, communication, and mutual support, leading to a more cohesive and interconnected educational ecosystem that prioritizes the success and well-being of all students.

By fostering community engagement in literacy initiatives, schools can create a collaborative and supportive learning environment that nurtures the development of strong literacy skills, fosters a love for learning, and prepares students for success in academic and personal endeavors.

SBSL helps support schools in community engagement through offering family and community engagement courses



Teach Me to Read At Home



Teach Me to Learn at Home

Our team empowers the district to learn how to deliver these programs to their communities.



**Bringing All The Pieces Together
For Academic Improvement**

www.sbsl.org |
610-398-1231 | info@sbsl.org